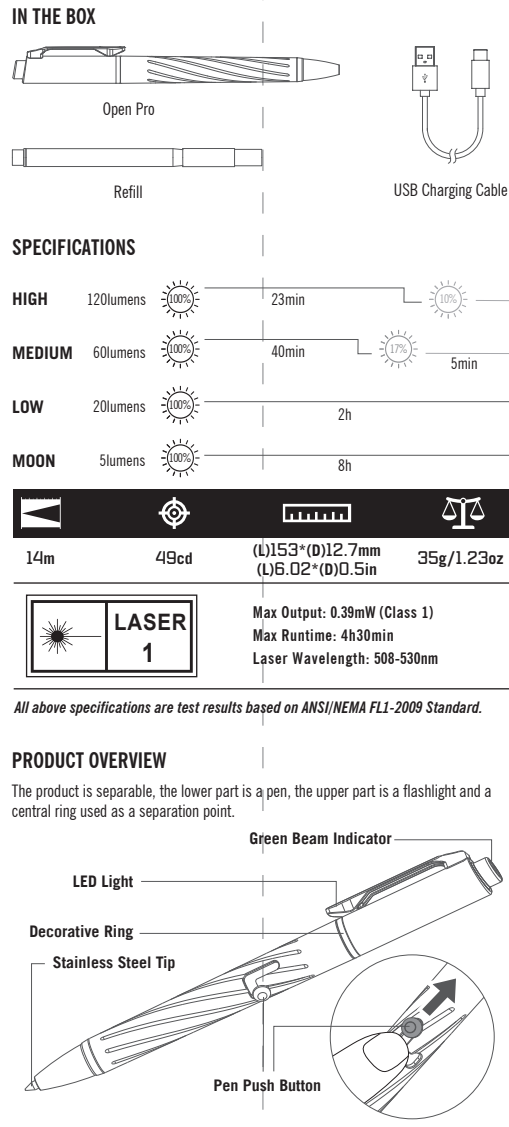
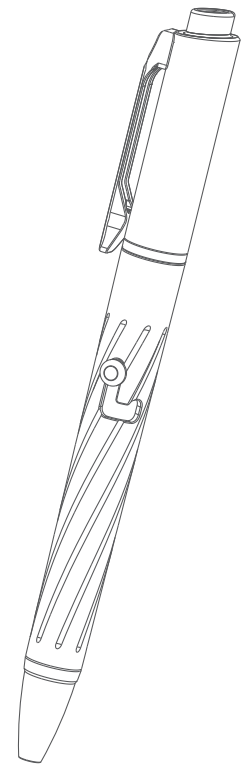
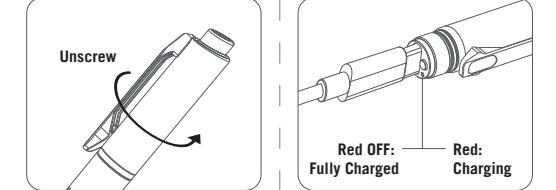


OLIGHT USER MANUAL



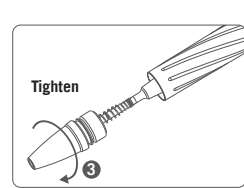
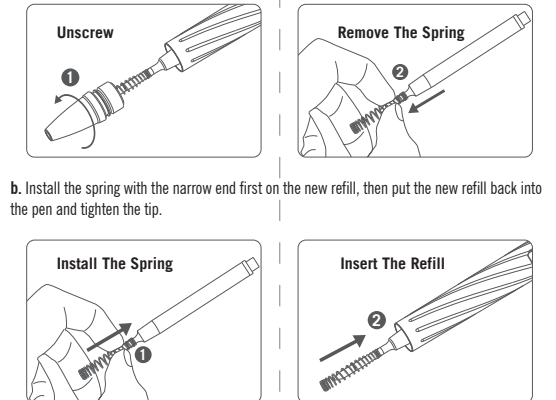
Thank you for purchasing this Olight Product. Please read this manual carefully before use and keep it for future reference!

NOTE: \* Slide up the button (in the direction of the arrow) to operate the LED light (please refer to the operating instructions for specific operation).



NOTE: \* Plug in the USB cable again when it is full charged, the charging indicator will still be Red for about 60 seconds.

REFILL REPLACEMENT a. Unscrew the tip, take out the refill and remove the spring from the refill.



DANGER • DO NOT shine the light directly into human eyes. This may cause temporary blindness or permanent damage to the eyes.

WARNING • If you have used it in a watery environment, please keep the product clean and dry before charging.

NOTICE
When the battery level is less than 5%, the maximum output is limited to 5 lumens.
The product adopts PWM dimming, which may cause noise when placed close to the radio.
The clip is suitable for clamping on objects not more than 3mm thick.
When replacing the refill, be careful not to deform the spring, as this may affect the use of the refill.
Writing on soft or padded surfaces may result in thicker lines.
Please keep the top lens of the pen cap clean, otherwise it may affect the use of the green beam.

CONTENTS
(EN) English ... 01
(CN) 简体中文 ... 01
(FI) Finnish ... 02
(NO) Norwegian ... 02
(SV) Swedish ... 03
(NL) Nederlands ... 04
(PL) Polska ... 04
(DE) Deutsch ... 05
(HU) Magyarország ... 06
(RU) Русский ... 06
(ES) Español ... 07
(RO) Romanesc ... 08
(UA) Ukrainian ... 08
(JP) 日本語 ... 09
(TH) ไทย ... 11
(FR) Français ... 11
(IT) Italia ... 12
(SK) Slovenský jazyk ... 13

(EN) English
HOW TO OPERATE
Used as a pen: Gently slide the pen push button along the L-shaped track to the bottom, the tip will appear and be locked, then you can start writing.
Used as a flashlight: ON/OFF: Slide up the button to turn the light ON (the default output is 5 lumens) / OFF.

(SV) Swedish
Bruke som en lommelykt:
PÅ/AV: Skriv knappen för å skru På (standard lysstyrke är 5 lumen) / AV
ENDRÉ LYSSTYRKE: Når lys er på, skriv knappen for å endre til low → medium → high → low.

(NL) Nederlands
HOE TE BEDIENEN
Bij gebruik als pen:
Schuif de penknop voorzichtig langs de L-vormige track naar beneden, de punt verschijnt en wordt vergrendeld, waarna u kunt beginnen met schrijven.

(HU) Magyarország
A HASZNÁLAT MÓDJA
Használat tollként:
Óvatosan csúsztassa végig a toll nyomógombját az L-alakú pályán az alsó végpontig.

(RU) Русский
ИНСТРУКЦИЯ
Использовать как ручку:
Аккуратно передвиньте головку штока ручки вниз до фиксирующего паза, после вы можете начать писать.

(IT) Italia
COME OPERARE
Usata come una penna:
Fai scorrere delicatamente il pulsante della penna lungo la guida a forma di L verso il basso, la punta apparirà e sarà bloccata.

(SK) Slovenský jazyk
AKO POUŽIŤ
Používané ako pero:
Opätne posuňte tlačidlo pera pozdĺž stopy v tvare písmena L nadol, objaví sa špička a je zablokovaná, potom môžete začať písať.

(DE) Deutsch
WARRANTY
Within 30 days of purchase:
Contact the original seller for repair or replacement.
Within 2 years of purchase:
Contact Olight for repair or replacement.

(FR) Français
WARRANTY
Within 30 days of purchase:
Contact the original seller for repair or replacement.
Within 2 years of purchase:
Contact Olight for repair or replacement.

(JP) 日本語
WARRANTY
Within 30 days of purchase:
Contact the original seller for repair or replacement.
Within 2 years of purchase:
Contact Olight for repair or replacement.

OLIGHT Dongguan Olight E-Commerce Technology Co., Ltd



EU-DECLARATION OF CONFORMITY
EU-Declaration of Conformity can be found here: https://olightworld.com/ec-declaration

4th Floor, Building 4, Kegou Industrial Park, No.6 Zhongnan Road, Changan Town, Dongguan City, Guangdong, China.



B. 7, 26, 2021
3.1322.6010.9003

明るさモード変更: 点灯しているときにボタンを上にスライドさせると、低→中→高→低と入力されます。
高輝度白色光: 消灯時にボタンを素早く2回上にスライドさせると、白色光の高モードに直接アクセスでき、もう一度2回上にスライドさせると月光モードに戻ります。

(KR) 한국어
작동 방법
펜으로 사용할 경우

제품 측면에 있는 L타입 레버를 가볍게 아래쪽으로 밀어 내려주시면 플랜싱이 나옵니다. 측면에 있는 L 타입 레버를 왼쪽으로 돌려주면 플랜싱이 제품 속으로 들어갑니다.

(JP) 日本語
使用方法
ペンとして使う:
ライトの中部のハンドルを軽く押して、L型レールに沿って底部までスライドさせ、ペン先が伸びてロックされ、書くことを始められます。

ライトと使う:
照明ライトとして使う:
オン/オフ: ボタンを上にスライドさせると、ライトがオン(初期出力は5ルーメン) / オフになります。

(RO) Romanesc
MOD OPERARE
Folosit ca pic:
Folosit ca lanternă:
PORNIT/OPRIT: Impinge in sus butonul pentru a aprinde (modul memorat este de 5 lum).

(ES) Español
CÓMO OPERAR
Usar como bolígrafo:
Usar como linterna:
ENCENDIDO / APAGADO: Deslice el botón hacia arriba para ENCENDER / APAGAR la linterna.

(RU) Русский
Использовать как ручку:
Использовать как фонарь:
Вкл/выкл: перевесте кнопку вверх/вниз до фиксирующего паза, после вы можете начать писать.

(UA) Ukrainian
ІНСТРУКЦІЯ З ВИКОРИСТАННЯ
Використовувати як ручку:
Аккуратно просуньте кнопку натискання ручки по доріжці у формі L донизу.

(HU) Magyarország
MOD OPERARE
Folosit ca pic:
Folosit ca lanternă:
PORNIT/OPRIT: Impinge in sus butonul pentru a aprinde (modul memorat este de 5 lum).

(DE) Deutsch
WARRANTY
Within 30 days of purchase:
Contact the original seller for repair or replacement.
Within 2 years of purchase:
Contact Olight for repair or replacement.

(FR) Français
WARRANTY
Within 30 days of purchase:
Contact the original seller for repair or replacement.
Within 2 years of purchase:
Contact Olight for repair or replacement.

(SK) Slovenský jazyk
AKO POUŽIŤ
Používané ako pero:
Opätne posuňte tlačidlo pera pozdĺž stopy v tvare písmena L nadol, objaví sa špička a je zablokovaná, potom môžete začať písať.

(NL) Nederlands
WARRANTY
Within 30 days of purchase:
Contact the original seller for repair or replacement.
Within 2 years of purchase:
Contact Olight for repair or replacement.

(IT) Italia
COME OPERARE
Usata come una penna:
Fai scorrere delicatamente il pulsante della penna lungo la guida a forma di L verso il basso, la punta apparirà e sarà bloccata.

(ES) Español
CÓMO OPERAR
Usar como bolígrafo:
Usar como linterna:
ENCENDIDO / APAGADO: Deslice el botón hacia arriba para ENCENDER / APAGAR la linterna.

B. 7, 26, 2021
3.1322.6010.9003